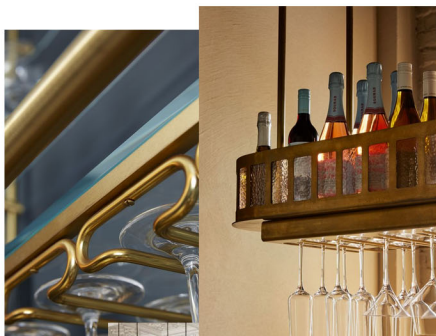




Glass and Bottle Holder

Small glass hanging area above bar between takeaway area and counter to softly divide the space



Counter

Counter to be in Brass or marble affect to be hard wearing and neutral



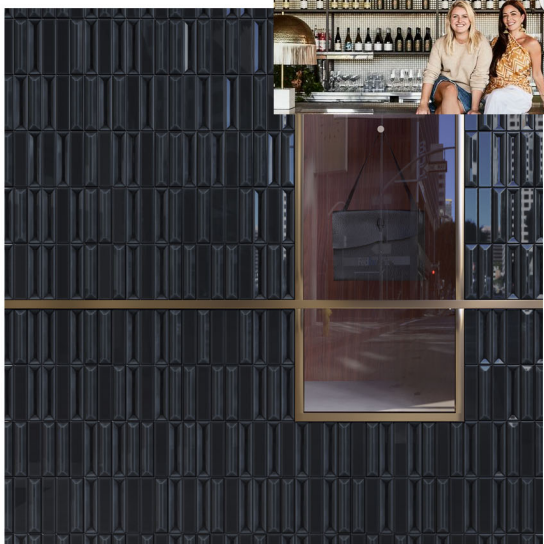
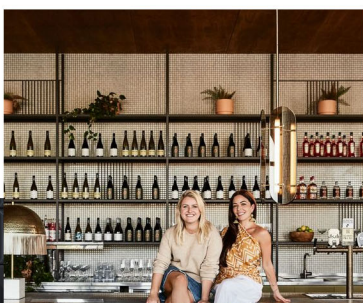
Above Bar

Four pendant lights hanging to give direct light on to top of bar and service area



Bar

Curved bar to welcome. Left side to be higher to demark takeaway service area. Bar to be tiled. Dark blue tiles shown below, reflecting the light. The dark blue works very well with Brass details



Wall Art

Large graphic of name on the wall behind the counter - to be visible as soon as enter space



Back Wall

Back wall to be tiles in off white tiles, with open shelving in front of it behind the bar for storage



Seating

Use of soft seating which will help with the acoustics, meaning it isn't too echo. Also bring in pattern and colour through the fabric on the bench and the chairs. Option to put a real statement chair in the back corner against the curtain as this will be a focal point from both entrances



Curtain Dividers

Two curtain dividers used between seating and w.c. and at entrance to stop the draft. Curtain material to be velvet and dark blue, to be heavy and also absorb noise.



Wall Lights

Warm wall lights used on the wall above the soft seating to give a warmth to the space

Flooring

Tiled floor throughout - floor to be split different tile used in takeaway area/ entrance to main space. Tiles in takeaway area to be more detailed.



Railings No. 31

Window Lights

Beautiful bright statement lights over the three tables in the window

